


TN-19-10-001 December 10, 2019		Tesla, Inc. Tech Notes
<b>Model:</b>	<b>Vehicle System:</b>	<b>Region:</b>
Model S	10 - Body	All

## Tech Note: Rework Front Door Panel For Earlier Pressure Sensor Design

Tech Notes are announcements that help to communicate and track new information about Tesla Service concerns. Such concerns may or may not be VIN specific. These instructions assume knowledge of motor vehicle and high voltage electrical component repairs, and should only be executed by trained professionals. Tesla assumes no liability for injury or property damage due to a failure to properly follow these instructions or for repairs attempted by unqualified individuals.

A new supplemental restraint system (SRS) pressure sensor was introduced to the Model S on February 22, 2019. All Service replacement doors are manufactured to accommodate the new sensor design. Perform the following procedure to make a replacement door panel compatible with the earlier sensor design.

	Part Number	Description	Quantity
<b>Parts Required</b>	1037045-00-A	RIVET NUT, M5X0.8, GRIP 0.5-3.3	2 or 4
	1045194-00-A	BUTYL FOIL PATCH 50x50x1mm	1-2
These part numbers were current at the time of publication. Use the revisions listed or later, unless otherwise specified in the <a href="#">Parts Catalog</a> .			
<b>Special Tools</b>	1054712-00-A	Thread Setter kit (NA, APAC)	
	1054712-01-A	Thread Setter kit (EMEA)	

### Procedure

**⚠ WARNING:** Wear proper personal protective equipment (PPE), such as safety glasses, when operating power tools.

1. Place the new door panel on a clean working surface.
2. Install a drill bit that is between 7.60 mm and 7.75 mm into the hand drill.
3. Locate the drill marks (x2) for the rivnuts (Figure 1).

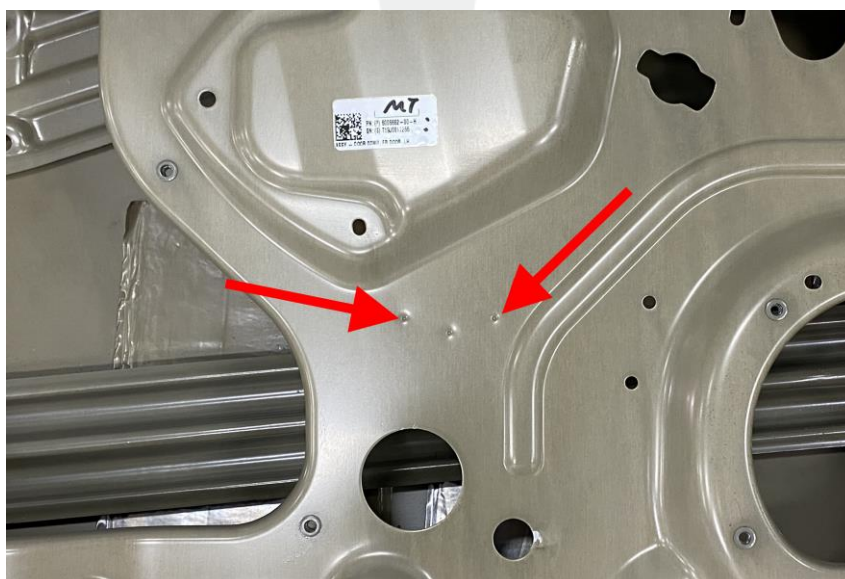


Figure 1 – LH door panel shown; RH similar

4. Drill holes (x2) into the door panel at the locations indicated in step 3 (Figure 2).



**Figure 2**

5. Install an 11 mm drill bit into the hand drill.
6. Locate the drill mark for the pressure sensor (Figure 3).



**Figure 3**

7. Drill a hole into the door panel at the location indicated in step 6 (Figure 4).



**Figure 4**

8. Deburr any sharp edges from the new drill holes and remove all metal shavings from the front door panel.
9. Install rivnuts into the rivnut holes (x2) (Figure 2) using the Thread Setter tool (Figures 5–6).

**TIP:** Insert the rivnut into the hole and squeeze the handles completely together.

**NOTE:** The 11 mm hole and 2 rivnuts will be used to mount the earlier style pressure sensor.



**Figure 5**



**Figure 6**

10. The new style pressure sensor mounting hole is no longer needed; cover it with a butyl patch (Figure 7).



**Figure 7 – LH door panel shown; RH similar**